



For more information about the People's Palace and Winter Gardens or any of Glasgow Museums' nine venues, please visit our website at www.glasgowmuseums.com

Glasgow Museums are part of Glasgow Life which is a registered charity. If you enjoyed your visit please make a donation in one of our donation boxes or visit our website for more ways to give to Glasgow Museums. Your support can help us grow and preserve our collections as well as helping us to enhance our education and access programmes. We can do more with your support.

If you have any queries during your visit please ask any member of staff in the galleries.

We hope you enjoy your visit and look forward to seeing you again.

Visiting the People's Palace

Tuesday to Thursday and Saturday
10.00am–5.00pm (closed Monday)

Friday and Sunday 11.00am–5.00pm

Winter Gardens opening times

Monday to Sunday 10.00am–5.00pm

By subway

15 minutes' walk from St Enoch
Subway station.

By rail

15 minutes' walk from Argyle Street,
Bellgrove and High Street rail stations.

By bus

First Bus services **2, 18, 40, 60, 61, 64, 240, 255** and **263** all stop near
Glasgow Green.

Facilities

Gallery shop, café, male and female toilets,
wheelchair access, free parking.



www.glasgowmuseums.com

Glasgow Green | Glasgow, G40 1AT |
Phone 0141 276 0788 | Text phone 0141 276 0795 |



People's Palace and Winter Gardens

floor plan



Plans and
visitor information

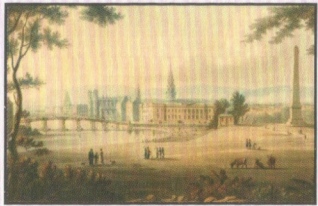
Welcome Bienvenue Willkommen Bienvenido Benvenuti
Prosiny van 歡迎 خیر مقدم

www.glasgowmuseums.com

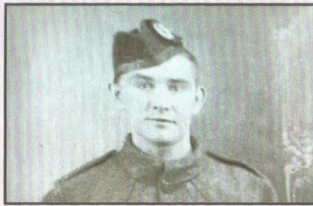
FREE

Don't Miss

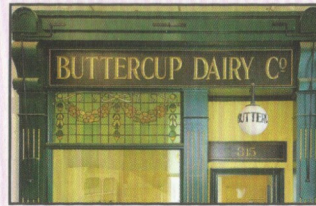
Things you must see at the People's Palace and Winter Gardens



1 On the Green



2 Private James Riley and Jean Riley's story



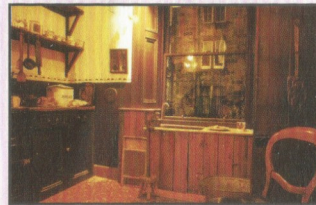
3 The Buttercup Dairy



4 The Steamie



5 People's Palace History Paintings
Ken Currie



6 The Single End

Facilities



Enquiry Desk



Disabled Access /
Toilets



Hearing System



Baby Changing



Shop



Emergency Exit



Ladies Toilets



Restaurant / Café



Lift



Gents Toilets

Gallery Rules

- Please do not touch the objects on display.
- Food and drink may not be taken into the galleries, and smoking is not permitted anywhere in this building.
- You may take photographs for personal use only. Please contact Glasgow Museums Photo Library on 0141 287 2595 regarding photography for commercial purposes, or to order prints or photographs.
- When using a mobile phone, please have consideration for other visitors.
- Glasgow Museums staff have the right to work in a safe environment free from violence and threatening behaviour. The police may be asked to prosecute any visitor acting in a violent or abusive way.

Gallery Guide

Welcome to the People's Palace and Winter Gardens. Here at Glasgow's social history museum, you'll learn about the story of the people and city from 1750 to the end of the 20th century. The thematic displays give a wonderful insight into how Glaswegians lived, worked and played in years gone by.

On the ground floor, the *Welcome Room* introduces the stories behind Glasgow's social history. *Gaun the Messages: Shops and Shopping in Glasgow* tells the history of shopping and retail in the city. *On the Green* uncovers the history of Glasgow Green.



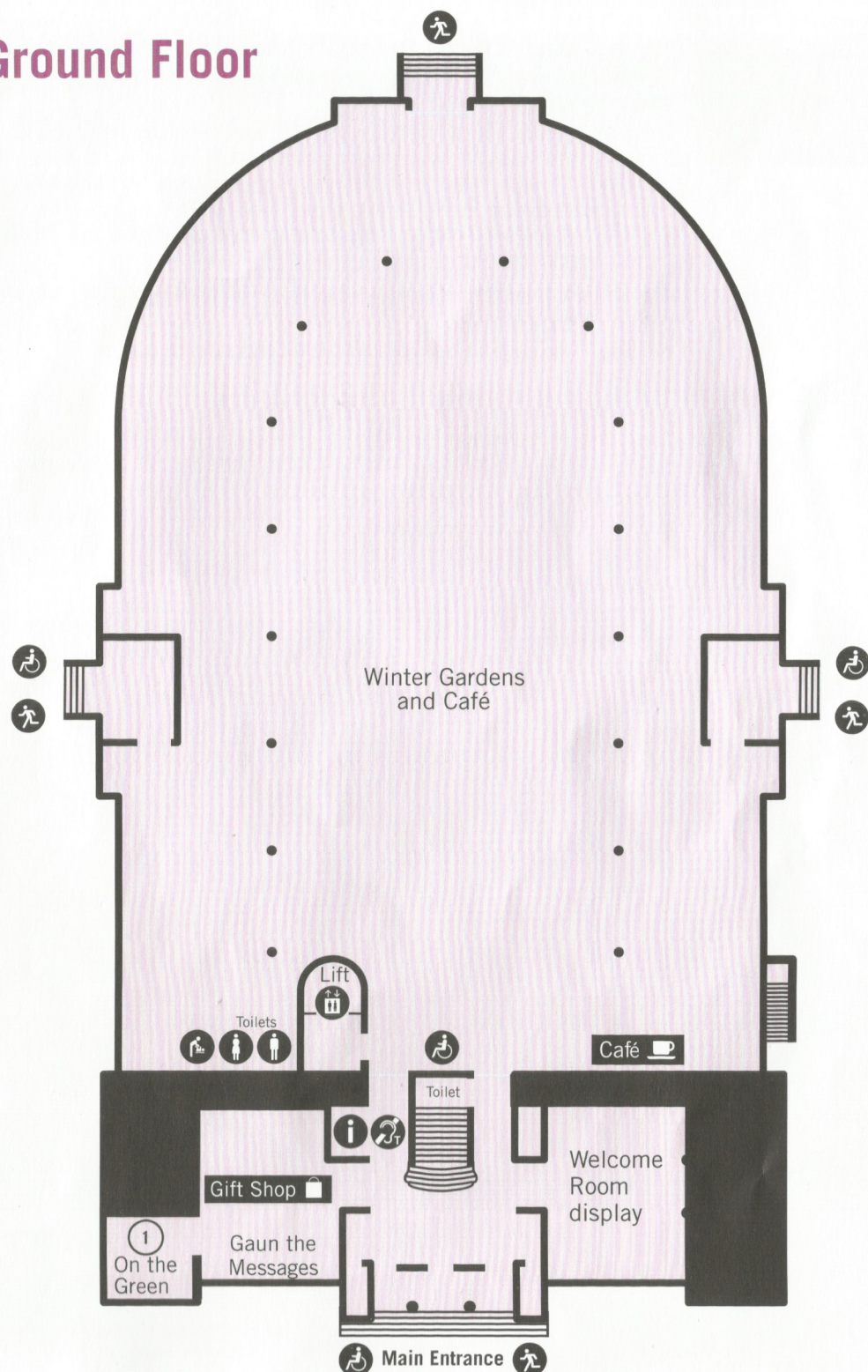
Upstairs, visit the *Single End* display to find out how many Glasgow families of the 1930s struggled to make ends meet in the cramped and uncomfortable conditions of a one-room tenement flat. Find out about the trades union movement and the struggles of the working class in the city. Don't miss the 'must-see' objects highlighted on this floor plan.

At the People's Palace there's always something to do, with a frequent programme of events ranging from workshops to talks and tours. Groups are advised to book in advance by calling 0141 276 9505.

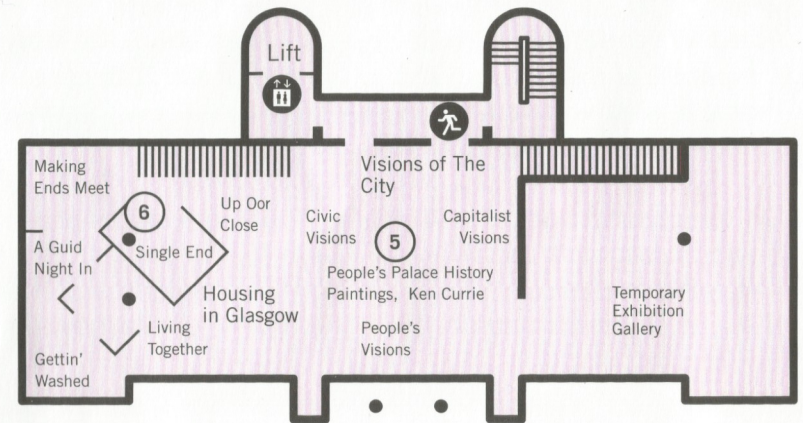
Don't forget to visit the museum shop and take a break in the Winter Gardens where you can wander among the exotic plants or enjoy a drink or lunch at the café. You may also want to visit Glasgow Green, one of the oldest public spaces in Glasgow.



Ground Floor



Second Floor



First Floor

